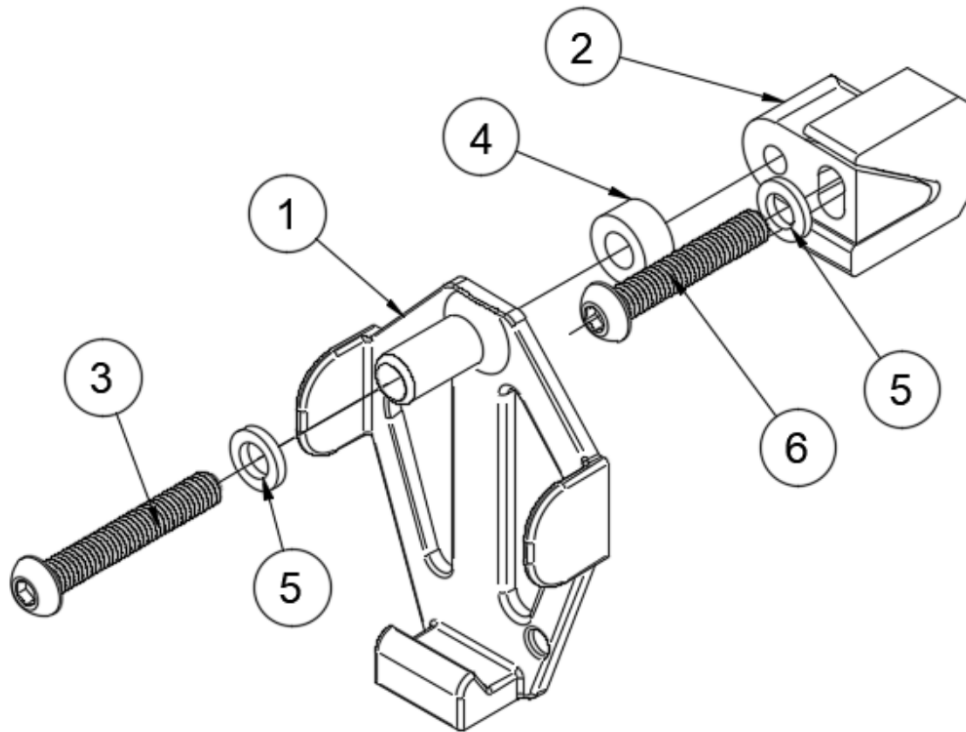


Universal No Drill MyLaps Transponder Bracket Install



Included Parts:

1. Mylaps bracket
2. Wedge clamp
3. 40mm or longer M6 bolt
4. 6mm (or larger) thick spacer
5. M6 Washer (2)
6. 35mm M6 bolt

Install Procedure:

1. Assemble the wedge clamps components [2] using the 35mm long M6 cap screws[6], and M6 washers [5] as shown in the diagram and leave the screws loose allowing the clamp to slide open and closed.
2. Using the Mylaps bracket [1] as a guide, position the wedge clamps in the desired location on the bumper or other part of the car. Usually the top flange of the grill opening is used but anything 3.5mm ($\sim\frac{1}{8}$ ") or thinner can be used. Note that care should be taken to not block the reverse/proximity/braking sensors in the front or rear bumper or put the transponder in a compromising position in the event of going off track. You should verify that the sensors in the bumper work before driving the vehicle.



3. Thoroughly clean the area where the clamp will rest and mount the wedge clamp [2]. Tighten the 35mm M6 bolt [6] to secure the wedge clamp [2] using a 4mm hex key.
4. Install the Mylaps transponder into the bracket [1] and feed the 40mm M6 bolt [3] through the M6 washer [5] then through the bracket [1] and spacer [4] finally threading the bolt into the wedge clamp [2]. Tighten the M6 bolt [3] using a 4mm hex key ensuring the transponder is pointing down to properly work with the track surface.
5. Ensure the transponder properly triggers the timing and reposition if necessary. Note that metal and carbon fiber components can potentially block the signal from the Mylaps transponder.